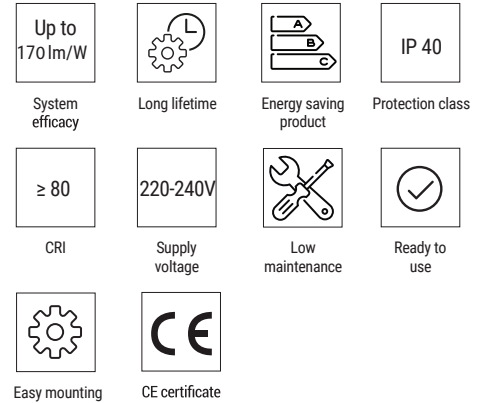


# M LUM GEN 2



M LUM GEN 2 linear lighting is an energy efficient, low maintenance system, and an alternative to traditional linear fluorescent lighting in various industrial, commercial and prefabricated applications. M LUM GEN 2 is an optimal solution for existing lighting systems and with low installation costs, and also an excellent choice for new installations.

	M LUM GEN 2
System efficacy	Up to 170 lm/W
Supply voltage	220-240 VAC 50/60Hz
Power	Up to 90W
Luminous flux	Up to 15,750 lm
Lifetime L80B10	> 90,000 h
CCT	4,000K, other optional
CRI	≥ 80
Ingress protection	IP 40
Operating temperature	-20°C to +50°C
Colour	RAL 9003
Remote control options	DALI
Housing material	Aluminium
Mounting	Pendant or surface mounting
Warranty	5 years
Certificates	CE



## MAIN FEATURES

Plug&Play lightweigt installation  
Fast installation

## APPLICATIONS

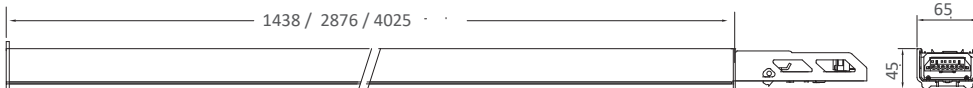
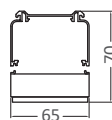
Warehouses  
Production facilities  
Shops  
Offices  
Schools

## ACCESSORIES

Emergency module  
Motion sensor

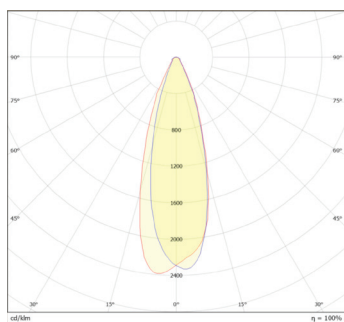


# DIMENSIONS

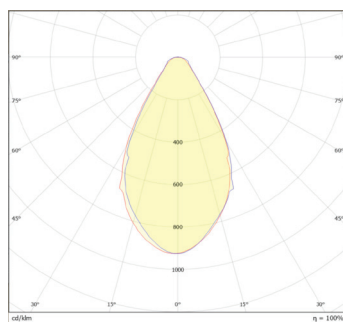


\*All dimensions are in mm.

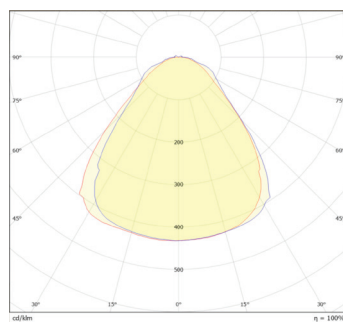
# OPTICS



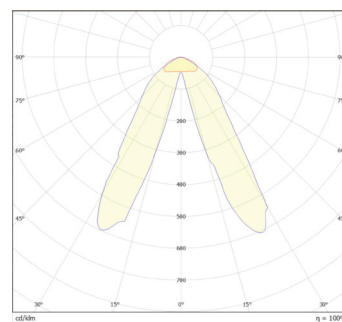
Distribution of luminance of 30° (30)



Distribution of luminance of 60° (60)



Distribution of luminance of 90° (90)



Distribution of luminance of 25° (2525)

# LED MODULE



Model	Power [W]	Length [mm]	Luminous flux [lm]*	Efficacy [lm/W]	Distribution of luminance	Type	Remote control options
M LUM G2 PS.1438.30.408.00	20-68 DIP Switch	1438	3400-11560	170	30°	M LUM G2	/
M LUM G2 PS.1438.60.408.00	20-68 DIP Switch	1438	3400-11560	170	60°	M LUM G2	/
M LUM G2 PS.1438.90.408.00	20-68 DIP Switch	1438	3400-11560	170	90°	M LUM G2	/
M LUM G2 PS.1438.2525.408.00	20-68 DIP Switch	1438	3400-11560	170	25°25°	M LUM G2	/
M LUM G2 PS.2012.30.408.00	22-73 DIP Switch	2012	3740-12410	170	30°	M LUM G2	/
M LUM G2 PS.2012.60.408.00	22-73 DIP Switch	2012	3740-12410	170	60°	M LUM G2	/
M LUM G2 PS.2012.90.408.00	22-73 DIP Switch	2012	3740-12410	170	90°	M LUM G2	/
M LUM G2 PS.2012.2525.408.00	22-73 DIP Switch	2012	3740-12410	170	25°25°	M LUM G2	/
M LUM G2 70.1438.30.408.01	70	1438	11900	170	30°	M LUM G2	DALI
M LUM G2 70.1438.60.408.01	70	1438	11900	170	60°	M LUM G2	DALI
M LUM G2 70.1438.90.408.01	70	1438	11900	170	90°	M LUM G2	DALI
M LUM G2 70.1438.2525.408.01	70	1438	11900	170	25°25°	M LUM G2	DALI
M LUM G2 90.2012.30.408.01	90	2012	15300	170	30°	M LUM G2	DALI
M LUM G2 90.2012.60.408.01	90	2012	15300	170	60°	M LUM G2	DALI
M LUM G2 90.2012.90.408.01	90	2012	15300	170	90°	M LUM G2	DALI
M LUM G2 90.2012.2525.408.01	90	2012	15300	170	25°25°	M LUM G2	DALI

# TRUNKING RAIL

Model	Length [mm]	Poles
M LUM G2 TRUNKING RAIL 1438.5	1438	5: L1, L2, L3, N, E
M LUM G2 TRUNKING RAIL 1438.7	1438	7: L1, L2, L3, N, E + DIM+,DIM-
M LUM G2 TRUNKING RAIL 1438.8	1438	8: L1, L2, L3, N, E ,CHR, DIM+,DIM-
M LUM G2 TRUNKING RAIL 1438.11	1438	11: L1, L2, L3, N, E , DIM+,DIM- ,EL1 ,EL2,EN1 ,EN2
M LUM G2 TRUNKING RAIL 2876.5	2876	5: L1, L2, L3, N, E
M LUM G2 TRUNKING RAIL 2876.7	2876	7: L1, L2, L3, N, E + DIM+,DIM-
M LUM G2 TRUNKING RAIL 2876.8	2876	8: L1, L2, L3, N, E ,CHR, DIM+,DIM-
M LUM G2 TRUNKING RAIL 2876.11	2876	11: L1, L2, L3, N, E , DIM+,DIM- ,EL1 ,EL2,EN1 ,EN2
M LUM G2 TRUNKING RAIL 4024.5	4024	5: L1, L2, L3, N, E
M LUM G2 TRUNKING RAIL 4024.7	4024	7: L1, L2, L3, N, E + DIM+,DIM-
M LUM G2 TRUNKING RAIL 4024.8	4024	8: L1, L2, L3, N, E ,CHR, DIM+,DIM-
M LUM G2 TRUNKING RAIL 4024.11	4024	11: L1, L2, L3, N, E , DIM+,DIM- ,EL1 ,EL2,EN1 ,EN2



DIP Switch position M LUM G2 PS.1438.xxx...		
Power [W]	Efficacy [lm/W]	Luminous flux [lm]*
20	170	3400
25	170	4250
32	170	5440
38	170	6460
48	170	8160
54	170	9180
60	170	10200
68	170	11560

DIP Switch position M LUM G2 PS.2012.xxx...		
Power [W]	Efficacy [lm/W]	Luminous flux [lm]*
22	170	3850
27	170	4725
34	170	5950
40	170	7000
50	170	8750
56	170	9800
62	175	10850
73	170	12775

## ACCESSORIES

Model	Length [mm]
M LUM G2 BLIND COVER 1438.PC	1438
M LUM G2 Feed END Box	
M LUM G2 Feed In Box 5P M LUM G2 Feed In Box 7P M LUM G2 Feed In Box 11P	
M LUM G2 End or Input cap	
M LUM G2 Ceiling fixing	
M LUM G2 Steel cable suspesion 2M	2000



\* Luminous flux applies to CCT 4000 K

The latest valid information is available at [www.lumenia.com](http://www.lumenia.com).

LUMENIA d.o.o., Kandrše 7, 1252 Vače, Slovenia  
Tel: +386 3 567 07 96, e-mail: [info@lumenia.com](mailto:info@lumenia.com)  
[www.lumenia.com](http://www.lumenia.com)