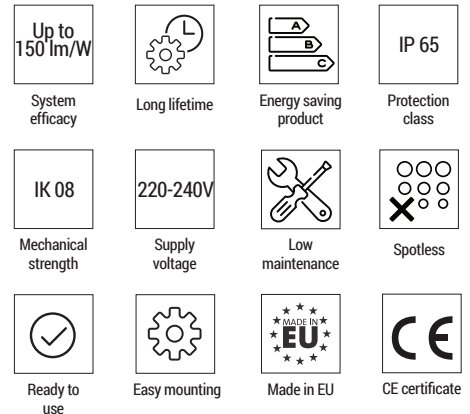




Q LUM is a unique industrial LED lamp with a thoughtfully designed gasket, end caps and extruded profile that provide a high level of protection against dust and water permeation. It is made of Polycarbonate, and is high heat and shock resistant. The Q LUM LED is ideal for garages, production facilities, workshops, and corridors.



	Q LUM		
System efficacy	Up to 150 lm/W		
Supply voltage	220-240 VAC		
Power	35 W	55 W	70 W
Luminous flux	4,900 lm	8,300 lm	10,500 lm
Weight	3.25 kg	3.08 kg	3.25 kg
Lifetime L70B50	> 60,000 h		
CCT	4,000 K		
CRI	≥ 80		
Photobiological risk	Risk group 0		
Ingress protection	IP 65 / IP66 optional		
Mechanical strength	IK 08		
Operating temperature	-10 °C to +35 °C		
Electrical / Appliance class	Class I		
Colour	RAL7035		
Remote control options	DALI (Optional)		
Housing material	Polycarbonate (PC)		
Mounting	Pendant or surface mounting		
Warranty	5 years		
Certificates	CE		



### MAIN FEATURES

Plug&Play lightweight installation  
Co-extruded optics  
Quick access to connectors

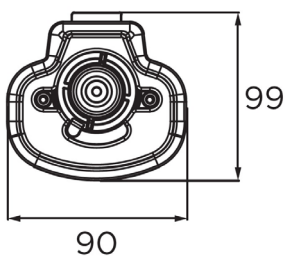
### APPLICATIONS

Garages  
Production facilities  
Workshops  
Corridors

### ACCESSORIES

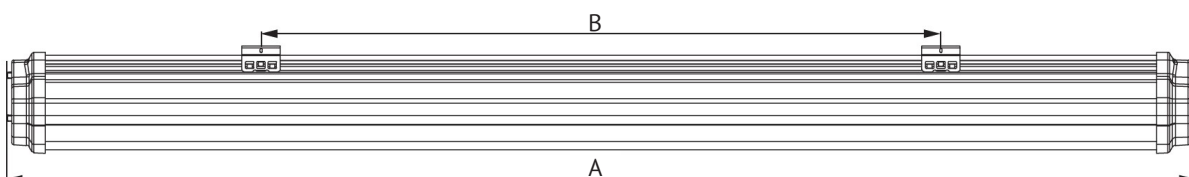
Mounting bracket

## DIMENSIONS

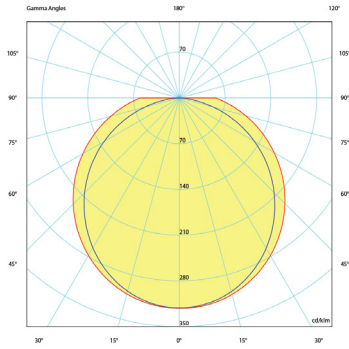


SIZES	Q LUM 1	Q LUM 2
A	1208	1488
B	575	575
KG	3,08	3,25

\*All dimensions are in mm.



# OPTIC



Suitable for industrial plants with lower ceilings.

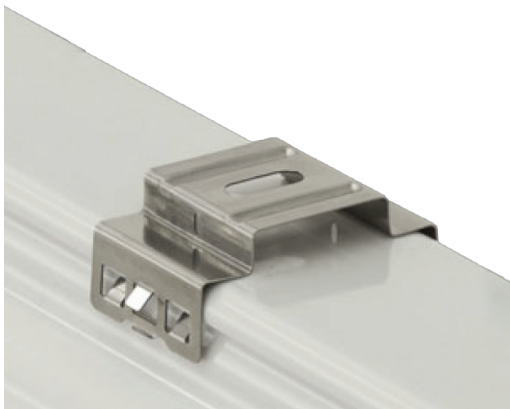
# PRODUCT VARIATIONS

Code	Power [W]	Luminous flux [lm]*	Efficacy [lm/W]	Body type
Q LUM 35.1500	35	Up to 4,900	140	Q LUM 2
Q LUM 55.1200	59	Up to 8,300	147	Q LUM 1
Q LUM 70.1500	70	Up to 10,500	150	Q LUM 2

\*Luminous flux is valid for CCT 4000 K

The latest validated data is available at [www.lumenia.com](http://www.lumenia.com).

# Q LUM MOUNTING ACCESSORY



Mounting on the wall or ceiling



Pendant mounting

# NOTES
